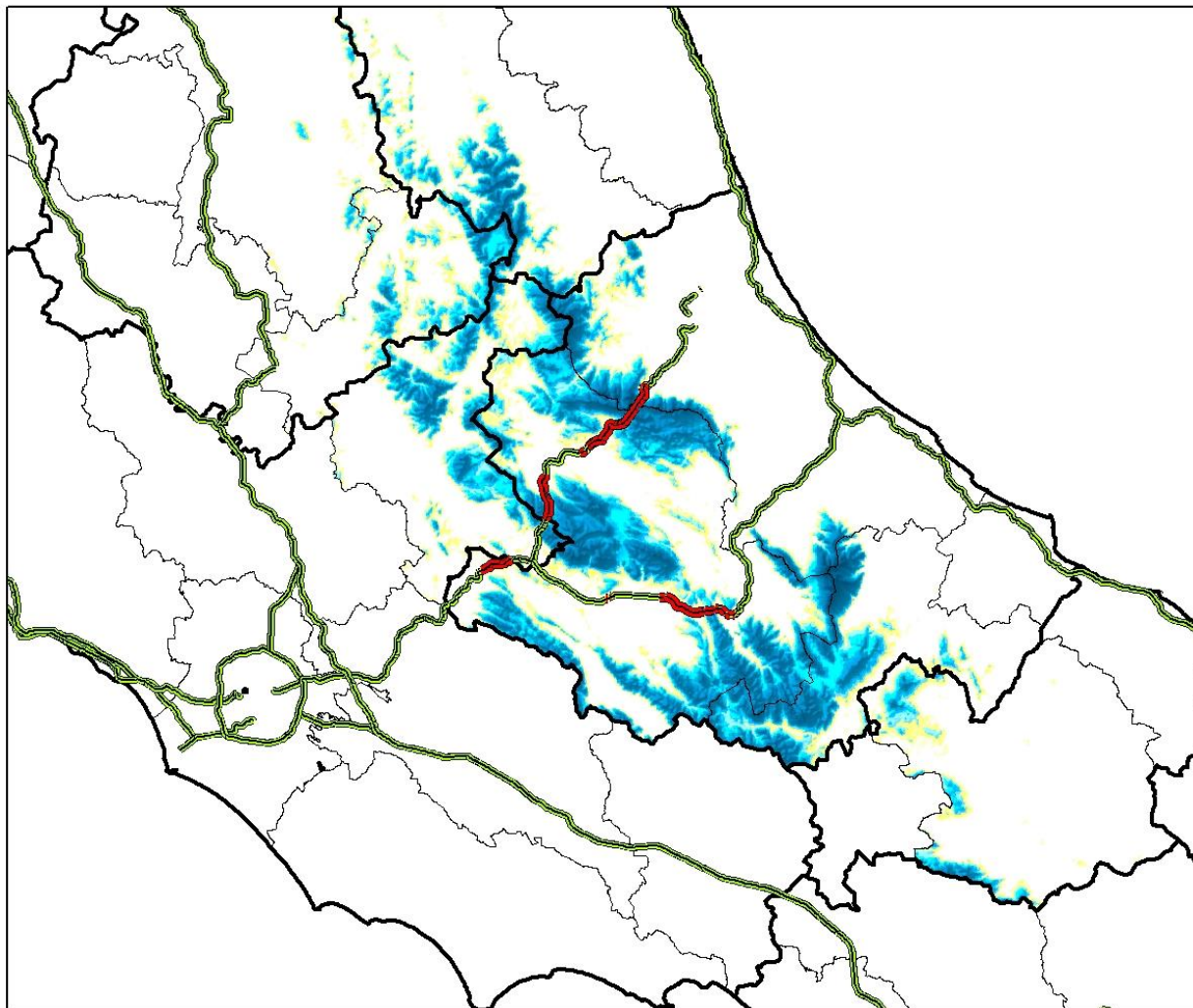






**Mapa della viabilità interessata da possibili precipitazioni  
nevose dalle 00.00 alle 24.00 del 14 novembre 2017**







Nevicata:

sui settori appenninici di Marche e Abruzzo, con quota neve sugli 800-900 metri,  
con apporti al suolo da deboli a moderati.

**Legenda**

-  Principali tratti stradali interessati da fenomeni nevosi
-  Principali tratti stradali
-  Regioni
-  Province

**Precipitazioni nevose**

-  Assenti o deboli non rilevanti
-  Deboli (< 5 cm)
-  Moderate (5 - 20 cm)
-  Elevate (> 20 cm)

**NB: la seguente mappa è una rappresentazione grafica qualitativa della situazione prevista e va interpretata alla luce di quanto riportato nel Bollettino di Vigilanza Meteorologica**